

SAVE THE DATE



NutrEvent

WHERE INNOVATION PARTNERSHIPS EMERGE

**The European meeting place
for innovation in Food, Human,
and Animal Nutrition**

Food
supplements



Ingredients
processing



Finished food
products

Feed
& pet food



Excipients
& functional
ingredients

**October
1st & 2nd
2024
Lille,
FRANCE**

10th EDITION

Organisers:



Invest for Success



Public Health Logistics



Animal Food Solutions



Land of Innovation



Land of innovation



Training and Innovation in Food & Health

Institutional partners:



Région Haut-de-France



METROPOLE



hello lille



Lille Grand Palais

With the support of:



Innovative Genomics



Biofortis



Offering the best of nature



Health & Innovation Solutions



LESAFFRE

NUTREVENT AT A GLANCE

NutrEvent is your opportunity to connect with international key innovators in the **Food, Human and Animal Nutrition** sectors. As a **unique European partnering event**, NutrEvent provides the ideal environment for academic and industrial actors to:

- **Build** partnerships
- **Source** innovative and competitive R&D projects
- **Foster** the emergence of collaborative projects
- **Increase** licensing opportunities
- **Obtain** funding and facilitate market access

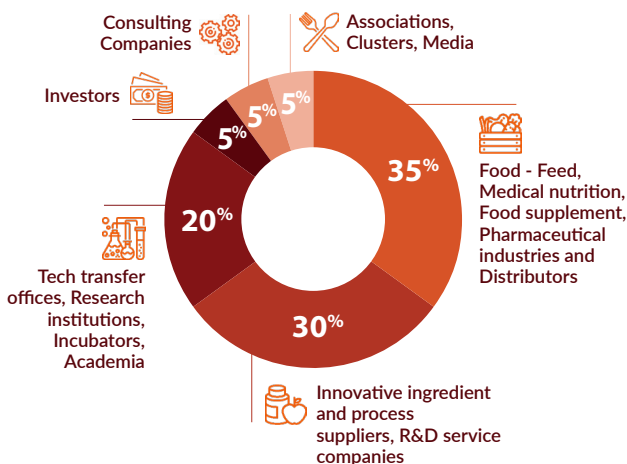


+600
DELEGATES

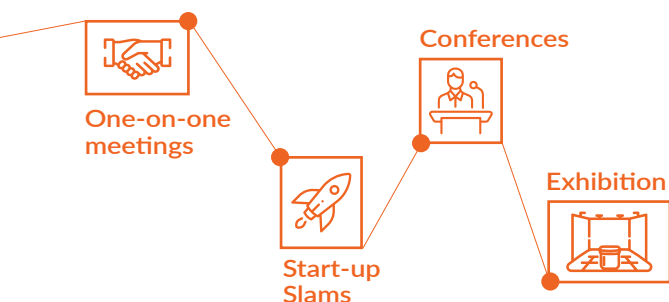


+25
COUNTRIES
REPRESENTED

Who will you meet?



Inside the event



ONE-ON-ONE MEETINGS

48
hours

**TO MEET YOUR FUTURE
PROJECT PARTNERS,
ACCELERATE
INNOVATION AND
OBTAIN FUNDING**

IDENTIFY



CONNECT

MEET



PARTNER

They trust us

FOOD, FEED, CLINICAL NUTRITION AND FOOD SUPPLEMENT INDUSTRIES

Agrial | Alver World SA | Beneo | Bridor Sodebo | Bosque
Foods | Bonduelle | Danone | Divaks | Eurial | Fleury Michon |
FrieslandCampina | Lactalis | Lonza | McCain | Mondelez | Nestlé
| Nutrileads | Pierre Fabre Group | Sodial | Symrise |
The akkermansia company...

INGREDIENT SUPPLIERS AND DISTRIBUTORS

Abyss Ingredient | Armor Proteines | BASF | Cargill | DSM |
Evolva | Givaudan | Ingredia | Ingredion | IMCD | Jungbunzlauer |
Kreglinger | Lallemand | Lesaffre | Naturex | Nexira | Nuscience |
Probiotical | Roquette | Rousselot Health & Nutrition | SeaNova |
Sensient | Onima (ex-Yeasty)...

TTO, ACADEMIA & RESEARCH INSTITUTES

Charles Violette Institute | ILSI Europe | INRAE |
Institute of Nutrition and Functional Foods |
Institut Pasteur de Lille | Kaunas University of Technology |
Laval University | Max Planck Institute | McGill University |
Monash University | NIZO food research | Qualiment |
TNO | UCLouvain | University of Leeds | University of Sevilla |
University of Surrey | Vrije Universiteit Brussel | Wageningen
University | Westminster University...

INVESTORS

Big Idea Ventures | Capital V | Carbyn partners | Cerea partners |
DSM Venturing | Five Seasons Ventures | New Protein Capital |
Peakbridge | Rockstart | Roquette Ventures | Seventure Partners
| Sienna Venture Capital | Tate & Lyle Ventures | The Yield Lab...

TECHNOLOGY AND SERVICE PROVIDERS

BaseClear | Biofortis | Bruker | BRAIN | ESIM Chemicals
| Extractis | Lycotec | Merieux Nutrisciences | Nat'Inov |
Phytocontrol | Procidys | Revobiom | Zymoptiq...

CONFERENCES



60

HIGH-LEVEL SPEAKERS

Steered by a prestigious Committee, NutrEvent offers a comprehensive programme dealing with the **R&D innovations and the latest market trends** in Food, Human and Animal Nutrition. Structured around 3 tracks, the conference sessions bring together international experts to discuss current innovation stakes and provoke conversations that matter for players in food supplements, finished food products and feed.

1

Latest trends in food supplement and medical nutrition innovation

2

Innovation in finished food products: Combining nutrition and sustainability

3

Animal nutrition innovation highlights

STEERING COMMITTEE

INDUSTRY & INVESTORS

- **Alain Baniel**, R&D Manager, **Ingredia**
- **Majbritt Byskov-Bridges**, Co-Founder & COO, **Alver**
- **Blanca Camarasa**, European Sales Manager, **Biocatalysts**
- **Eric Chappuis**, R&D Scientific & Regulatory Affairs Senior Scientist, **Cargill**
- **Isabelle de Crémoux**, CEO, **Seventure Partners**
- **Juliette Raoul-Fortés**, Associate, **Capagro**
- **Catherine Lefranc-Millot**, Senior Nutrition & Health R&D Manager, **Roquette Group**
- **Françoise Le Vacon**, Chief Scientific Officer, **Biofortis**
- **Emmeline Salameh**, Research Scientist in Nutrition, **Lactalis**
- **Christine O'neil**, CEO, **Healthy Ingredient Solutions (HISCO)**
- **Bertrand Rodriguez**, Research and Applications - BIOTIC Team Leader, **Gnosis by Lesaffre**
- **Isabelle Socquet**, R&D scientific and medical communication, **Arkopharma**

ACADEMIA

- **Laurent Bazinet**, Professor, **Institute of Nutrition and Functional Foods (INAF)**
- **Clair-Yves Boquien**, Deputy Director, **CRNH Ouest**
- **Jean-Michel Lecerf**, Physician and Nutritionist specialist & Head of Nutrition service, **Institut Pasteur de Lille**
- **Roberta Re**, Director, **Cambridge Food Science**
- **Giovanni Sogari**, Associate Professor in consumer food behavior, **Department of Food and Drug, University of Parma**

ASSOCIATIONS & CLUSTERS

- **Régine Brielle**, Nutrition, health and e-health project manager, **Biotech Santé Bretagne**
- **Jean-François Balducchi**, Managing Director, **Atlanpole**
- **Doris Bell**, Funding Advisor for EU programmes, **University of Southern Denmark**
- **Nico van Belzen**, Director General, **ScienceConsult**
- **Yuan Chai**, International Affairs Officer, **Wagralim**
- **Kees De Gooijer**, Director, **TKI Agri&Food**
- **Florence Hallouin**, Deputy Director, **Atlanpole Biotherapies**
- **Jean-Luc Perrot**, Executive Director, **Valorial**
- **Etienne Vervaecke**, General Manager, **Eurasanté & Clubster NHL**
- **Ariane Voyatzakis**, Innovation manager, **Ania**

START-UP SLAMS

The 2024 Start-up Slams are sponsored by:



and in partnership with:



The **NutrEvent Start-up Slams** offer the opportunity to detect the most innovative and promising start-ups, in order to foster **partnerships and business development** in the Food, Human and Animal Nutrition sectors.



The selected candidates will pitch to a jury of experts and in front of NutrEvent's audience and receive advice and feedback ("**speed-mentoring**") from a panel of experts.

Before the event, each candidate will have enhanced visibility on NutrEvent communications and the opportunity to be coached to improve their pitch during a **warm-up session** with NutrEvent Steering Committee members.

The winner(s) will be awarded as the **most innovative start-up(s)** in Europe.

The Start-up Slams are a great opportunity for **young companies** seeking to raise a financing round to showcase their project in front of potential partners and investors.

APPLY

Before June 26th, 2024

BE SELECTED

By a jury of experts

PITCH

During NutrEvent

JOIN NUTREVENT 2024

Registration fees

FULL PASS

Fees per person
(excl. VAT)

	SUPER EARLY BIRD OFFER Before February 8 th , 2024 incl.	EARLY BIRD OFFER From February 9 th to April 4 th , 2024 incl.	REGULAR FEE From April 5 th to August 1 st , 2024	LATE REGISTRATION From August 2 nd , 2024
Mature company (> 5 years old)	€ 690	€ 794	€ 897	€ 995
Non-profit organisation / TTO / Research institute	€ 550	€ 633	€ 715	€ 757
Emerging company (≤ 5 years old)	€ 420	€ 483	€ 546	€ 635
SME (≤ 5 employees)	€ 420	€ 483	€ 546	€ 635
Academic research fellow / Associate	€ 330	€ 380	€ 429	€ 477

Investor

Contact us: Nicolas Lechevallier | nlechevallier@eurasante.com | +33 (0)3 28 55 90 71

VISITOR PASS

Fee per person (excl. VAT)

€ 300

Exhibition fees

(excl. VAT)

	SUPER EARLY BIRD OFFER Before February 8 th , 2024 incl.	EARLY BIRD OFFER From February 9 th to April 4 th , 2024 incl.	REGULAR FEE From April 5 th , 2024
Start-up corner 4m ² (≤ 5 years old incl. 1 full pass)	€ 1,430	€ 1,573	€ 1,727
6 m ² fitted stand (incl. 1 full pass* + 1 visitor pass**)	€ 1,870	€ 2,057	€ 2,260
9 m ² fitted stand (incl. 1 full pass* + 1 visitor pass**)	€ 3,080	€ 3,388	€ 3,718
12 m ² fitted stand (incl. 1 full pass* + 2 visitor passes**)	€ 4,290	€ 4,719	€ 5,192
18 m ² fitted stand (incl. 2 full passes* + 1 visitor pass**)	€ 6,050	€ 6,655	€ 7,315

*The FULL PASS gives access to all NutrEvent activities including the partnering platform to pre-organise one-on-one meetings.

**The VISITOR PASS gives access to all NutrEvent activities except the partnering platform.

Sponsorship opportunities

(excl. VAT)



PLATINUM
Sponsor

€ 20,000



GOLD
Sponsor

€ 17,000



SILVER
Sponsor

€ 12,500



BRONZE
Sponsor

€ 7,500

Please contact us for customised sponsorship and exhibition opportunities.

Contact

Nicolas Lechevallier
nlechevallier@eurasante.com
+33 (0) 328 559 071

Event venue

LILLE GRAND PALAIS
1, Boulevard des Cités Unies
59777 Lille, FRANCE

www.nutrevent.com

NutrEvent